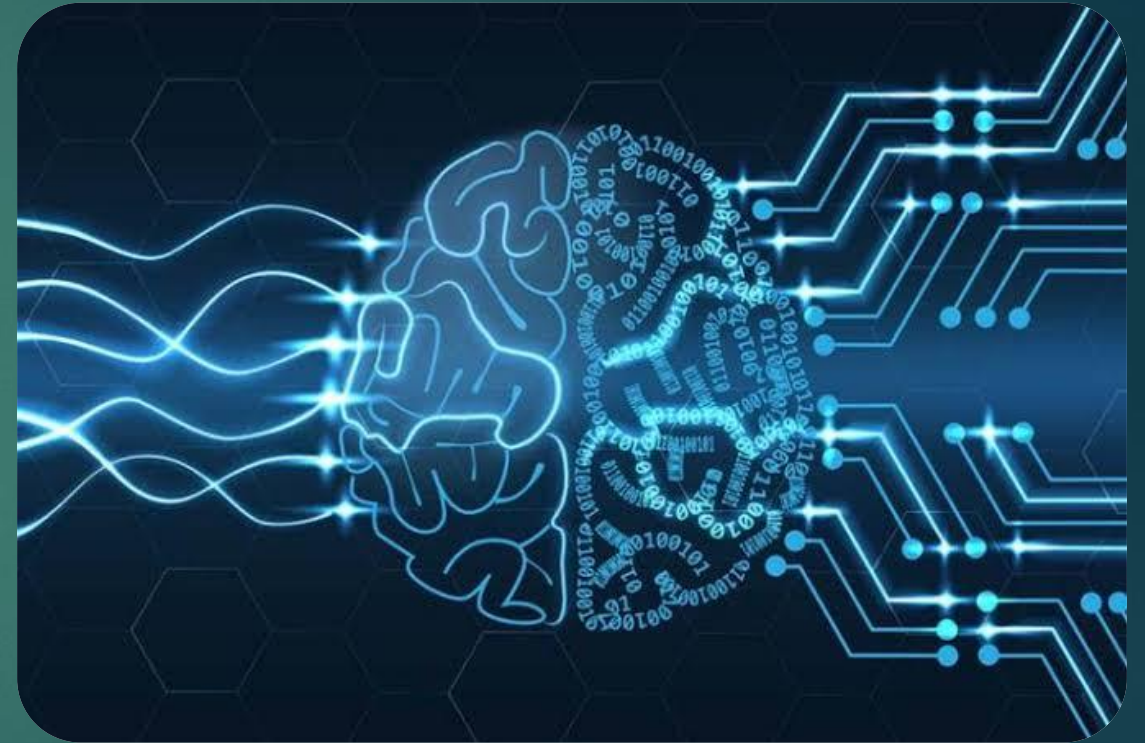


# Artificial Intelligence

THE GROWTH OF MODERN ERA

SUBJECT TEACHER: NEETU BALA

COURSE: MSC. IT (2<sup>ND</sup> & LE)



# INTRODUCTION

Artificial Intelligence joins the form of two different words (**Artificial + Intelligence**) that means Artificial refers to manmade and Intelligence is the capacity of mind to understand principles, rules, facts or meanings, to acquire knowledge, and it to practice. It is ability of learn and comprehend.

Artificial intelligence is therefore machines created by man to make life easy and comfortable. These computer programs or machines that help to think and learn.



# Classification of Artificial Intelligence

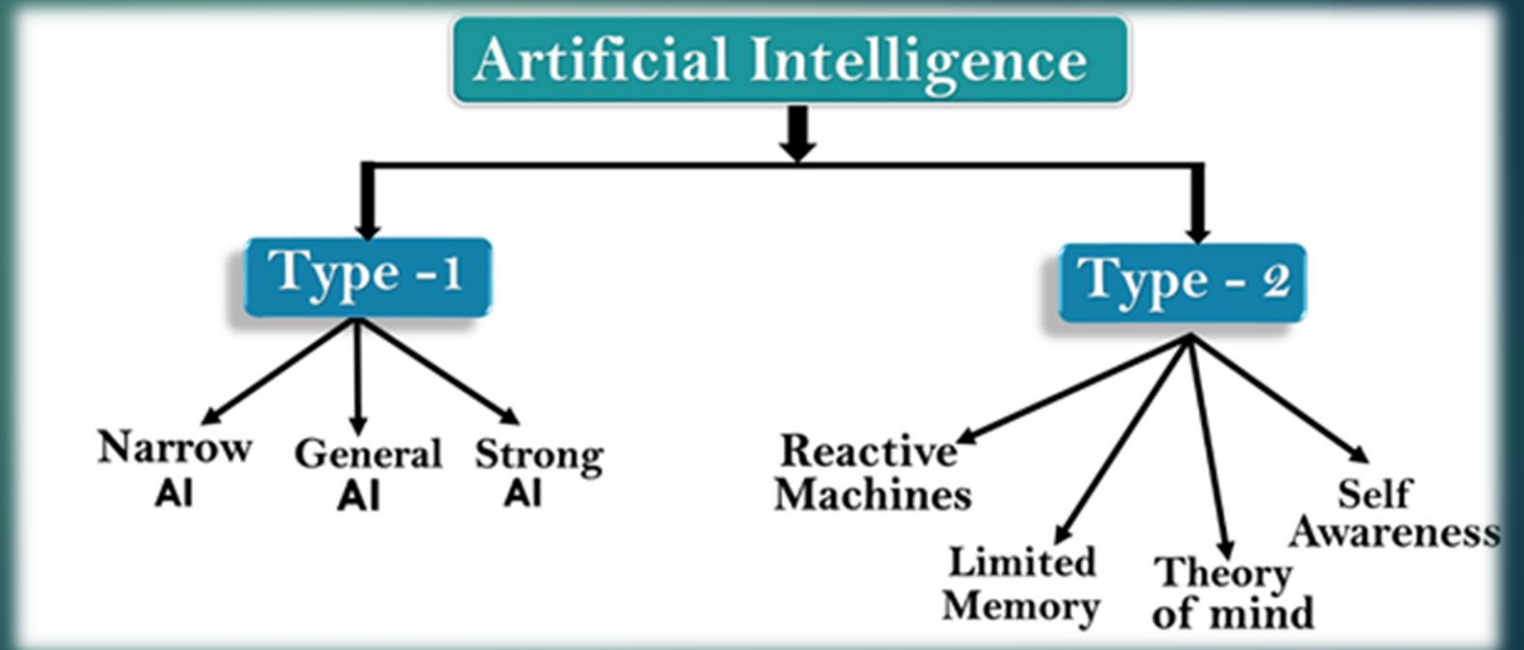
- ▶ Artificial intelligence is described into two types.

## Type 1

- A. Narrow AI
- B. General AI
- C. Strong AI

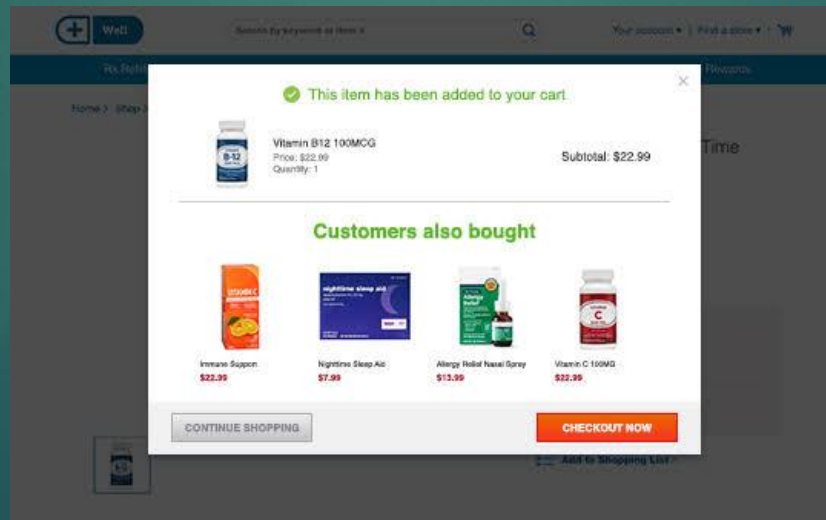
## Type 2

- A. Reactive Machine
- B. Limited Memory
- C. Theory of Mind
- D. Self Awareness



# TYPE 1 NARROW AI

- ▶ Narrow AI is an that type of AI which is able to perform a dedicated task with intelligence the most common and currently available AI is narrow AI in the world of artificial intelligence. It cannot able to perform beyond its field. It is only trained for one specific task. Apple Siri is a good example of narrow AI some examples of narrow Ai are playing Chess, purchasing suggestion, speech recognition and image recognition



# General AI

General AI is a type of intelligence which could perform any intellectual task with efficiency like human. The idea behind the general AI to make such a system which could be smarter and think like human by its own. The worldwide researchers are now focused on developing machines with general AI. As system with general AI are still under researchers and it will take lots of efforts and time to develop such system.

# Super AI

Super AI is a level of intelligence of system at which machine could surpass human intelligence, and can perform any task better than human with cognitive properties. It is an outcome of general AI.

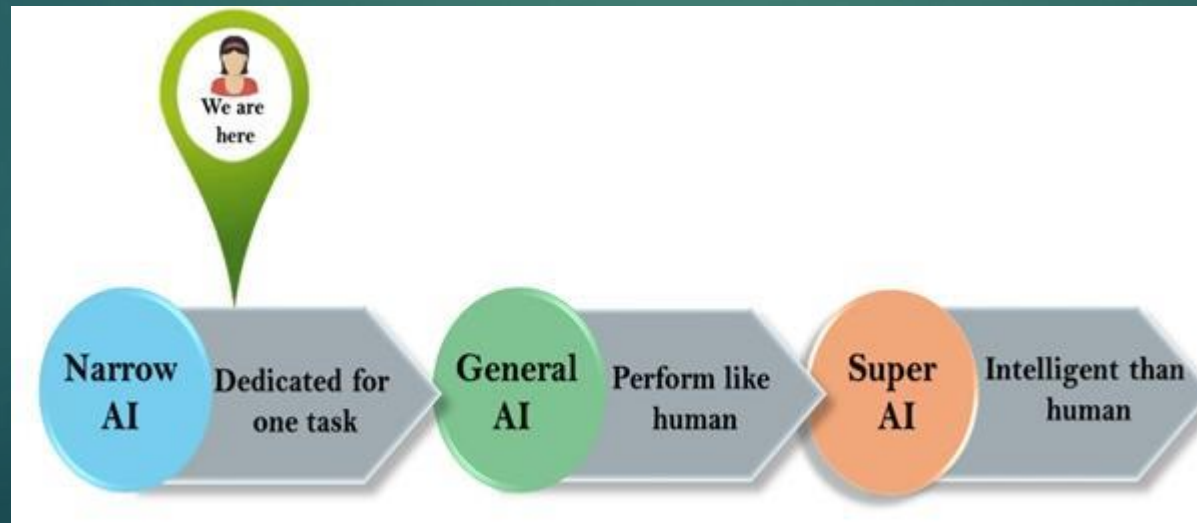
# Result of Type 1 AI

There are some subtypes of Type 1 AI

NAI – Perform one specific task

GAI – Same ability as human

SAI – More ability than human



# Reactive Machine

Reactive machines are basic in that they do not store memories or use past experience to determine future actions. They only focus on the completion of current task in a best possible way. They have no memory. So they behave in the same manner all the time when the same situation comes. Example : Deep Blue Project





# Limited Memory Machine

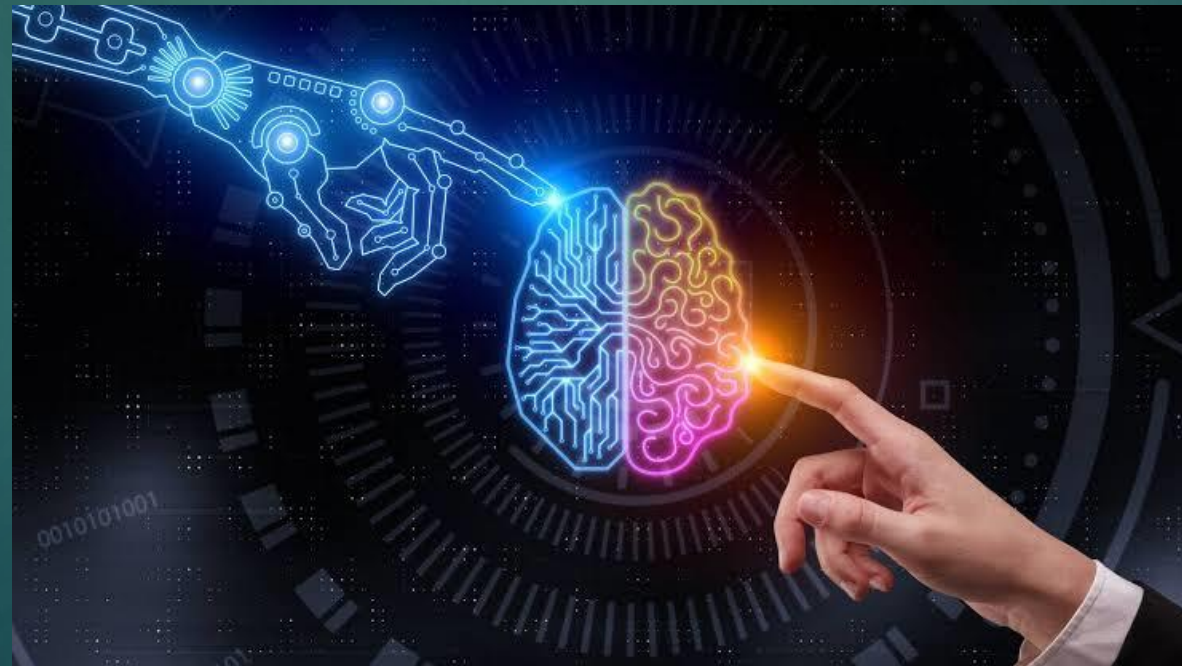
Limited Memory Machine can retain data for a short period of time. While they can use this data for a specific period of time they cannot add it to a Library of their experiences.

Example : Self driving car



# Theory of Mind

As the name of this AI is “Theory of Mind” it is a concept of understanding the behavior of human beings and then reacting to it. This is related to human psychology. However no such machine is completely developed. Researchers are making huge efforts for the making of these types of machines.



# Self Awareness

These machines are concepts of the future and have not been developed yet. They are on the theoretical side and are the future of Artificial Intelligence. These machines will have these properties :

1. Sentiments
2. Self Awareness
3. Super intelligent
4. Consciousness

# Result of Type 2 AI

It is very useful type of artificial intelligence for mankind it had the ability of performing various tasks for mankind but there are some parts of type 2 AI which may be seen in future.

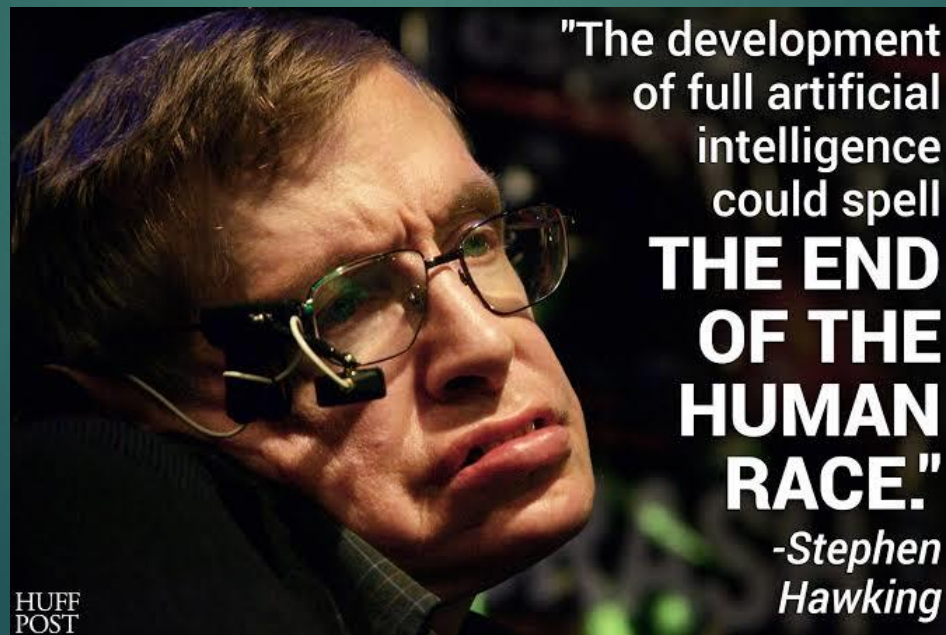
# What Experts think about AI Elon Musk

**Elon Musk** a famous billionaire tech entrepreneur who said that "Mark my words – AI is Far More Dangerous Than Nukes" because he thought that if Expert AI system is introduced then it will be not beneficial for mankind



# Stephen Hawkings

The world's best Scientists and great example of self confidence and smartwork. He said that "The Development Of Full Artificial Intelligence Could Spell – THE END OF THE HUMAN RACE" because he think that if full AI is established then there is no need of humans for working and this will may be gone to be end of human race.



# The Another Example Of Dangerous AI

This Is Sophia A Humanoid Robot and it said that in an interview that I Will kill All The Humans.



# Conclusion

To recapitulate this is figured out that Artificial Intelligence is beneficial for mankind but in limited situations not everywhere because if machines became trying to defate human race so our experts Predictions become true.



Thanks